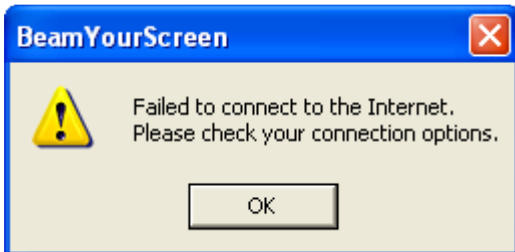



BeamYourScreen & Personal Firewalls



Create an Exception Rule

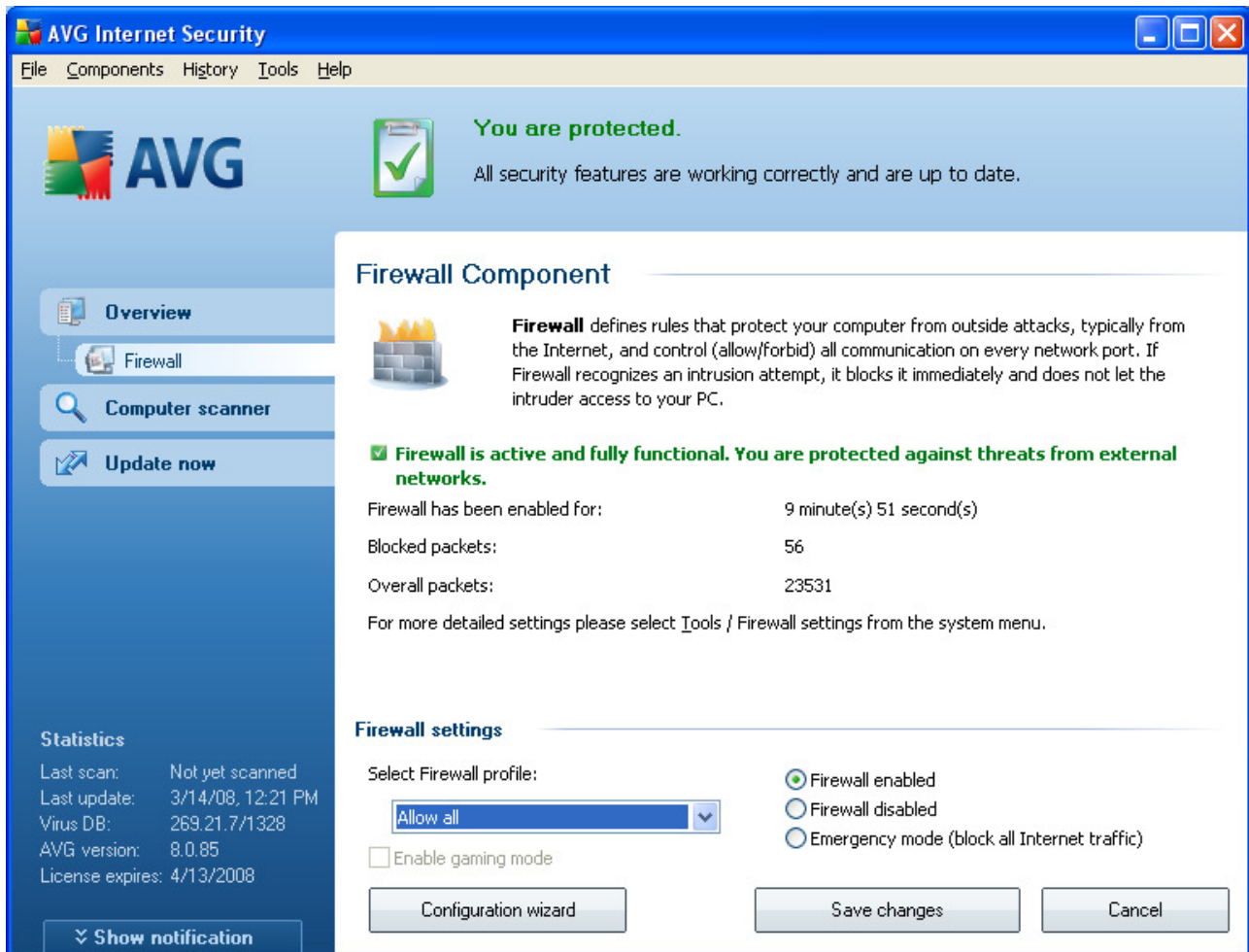
If you use Norton Internet Security personal firewall on your PC you might have to create an **Exception Rule** for BeamYourScreen first. In case you receive the following message please proceed as described below.



Click on the AVG Internet Security icon  next to your computer clock. The AVG Internet Security window will open. Click on **Firewall**.

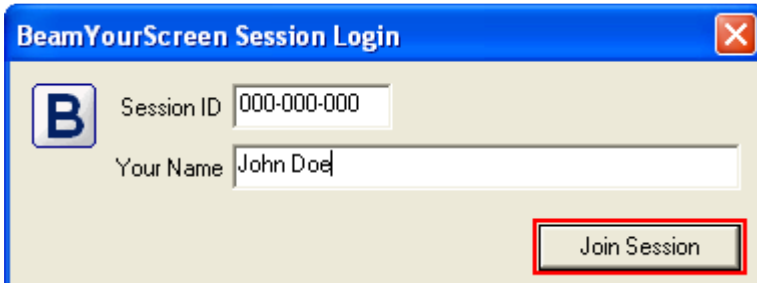


Under **Firewall settings** choose **Allow all** in the drop down menu.



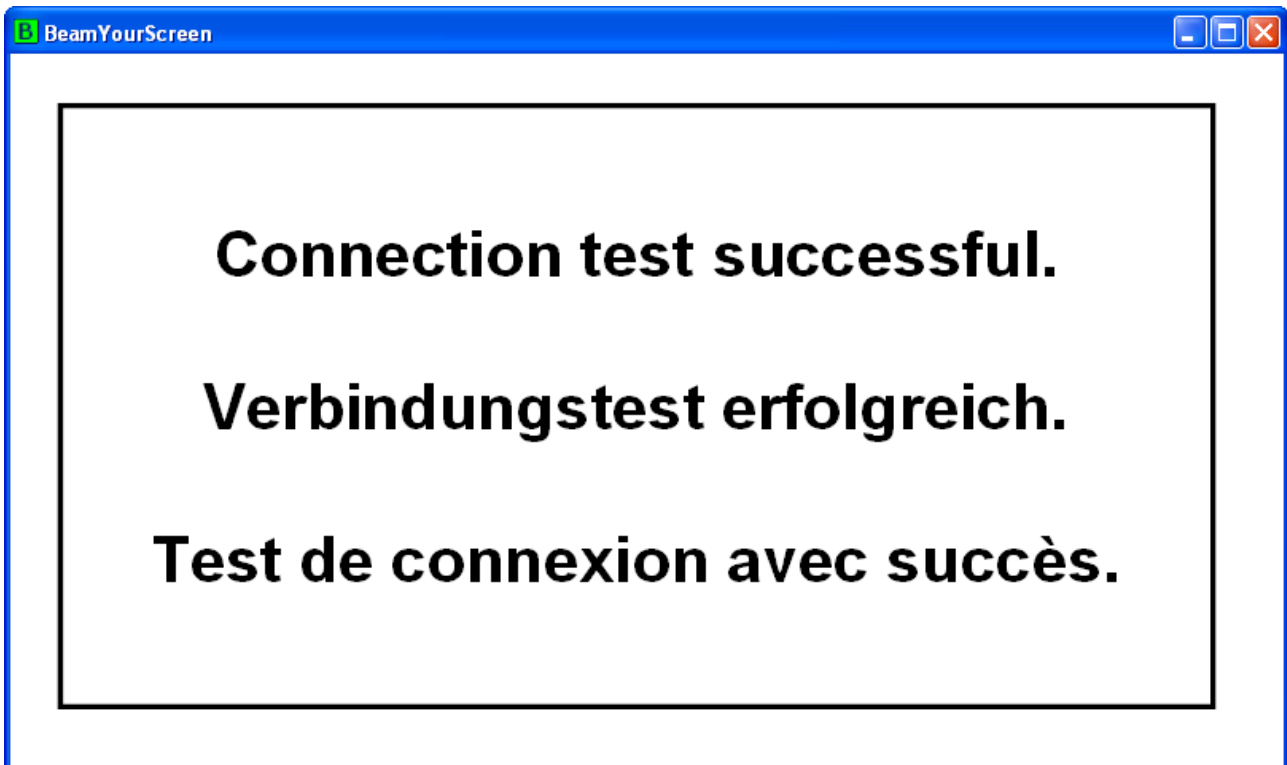
Run a Connection Test

Go to the BeamYourScreen homepage and click on Join Session. When prompted enter 000-000-000 as session ID and your name. Then click Join Session.



The screenshot shows a dialog box titled "BeamYourScreen Session Login". It features a blue header bar with a close button (X) in the top right corner. On the left side, there is a blue square icon containing a white letter 'B'. To the right of the icon, there are two input fields: "Session ID" with the value "000-000-000" and "Your Name" with the value "John Doe". At the bottom right of the dialog, there is a button labeled "Join Session" which is highlighted with a red rectangular border.

The following message shall appear:



Support

We offer support by Email, Phone, and Live Support Chat.

Email: support@BeamYourScreen.com

Chat: www.BeamYourScreen.com/Chat

Phone: UK: +44-(0)208-099-7855

USA: +1-646-292-7142

Germany: +49-(0)621-7001-9980

Please feel free to contact us, should you have any questions.